

ABOUT US

✔ **provide a truly Japanese experience.**

We have only pure silk Kimono and an expert stylist who have been working with Kimono for more than 20 years.

✔ **located within 1min walk from Hirosaki Park.**

Our store is located near the Hirosaki Castle Park, Tourist Information Office, City hall and other Tourist facilities.

✔ **a cozy store is unique to us.**

This store is a family-owned business, so you can feel comfortable and enjoy a unique experience.

COORDINATE



If you'd like to **see more coordinations** of rental Kimono, you can check them out **on our Instagram**.



@kimono_y

CASH BACK

If you make a post about our store on social media, you can show it to us for **1000 yen cash back** (tax included)



#kimono_yumeya

Please show us your posting at return.

1 | BOOKING

Please let us know the items below through "Details" on the online inquiry form.

- A preferred date and time
- The number of people
- Each age (age group), height, shoe size, hip size

If you have any trouble finding our store, please feel free to contact us ;)

COMING TO OUR STORE

2

3 | SELECTING

We have a wide variety of Kimono and Obi. You can enjoy many combinations.

* There are limited Kimono in tall sizes.

4 | DRESSING

Getting dressed by a professional Kimono dresser.

1. Ta-bi (socks)



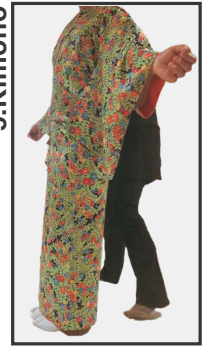
2. Underware



3. Shaping_up



4. Juban (undershirt)



5. Kimono



Completion !



BACK

FRONT



8. Obiage*



7. Obi



6. Adjusting



9. Obijime*

*You can also select "Obiage" and "Obijime"

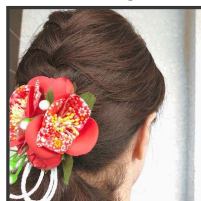
5 | CHOOSING ACCESSORIES

You can choose beautiful accessories.



Bag

Hair accessory



You can leave all your luggages except your valuables in our shop while you are sightseeing. Please enjoy Hirosaki city!

6 | PAYMENT & DEPARTURE

6

7 | RETURN

OPEN: Mon.- Sat. 10am to 6pm

Please return all rental items to our shop by 12pm noon of the following day.